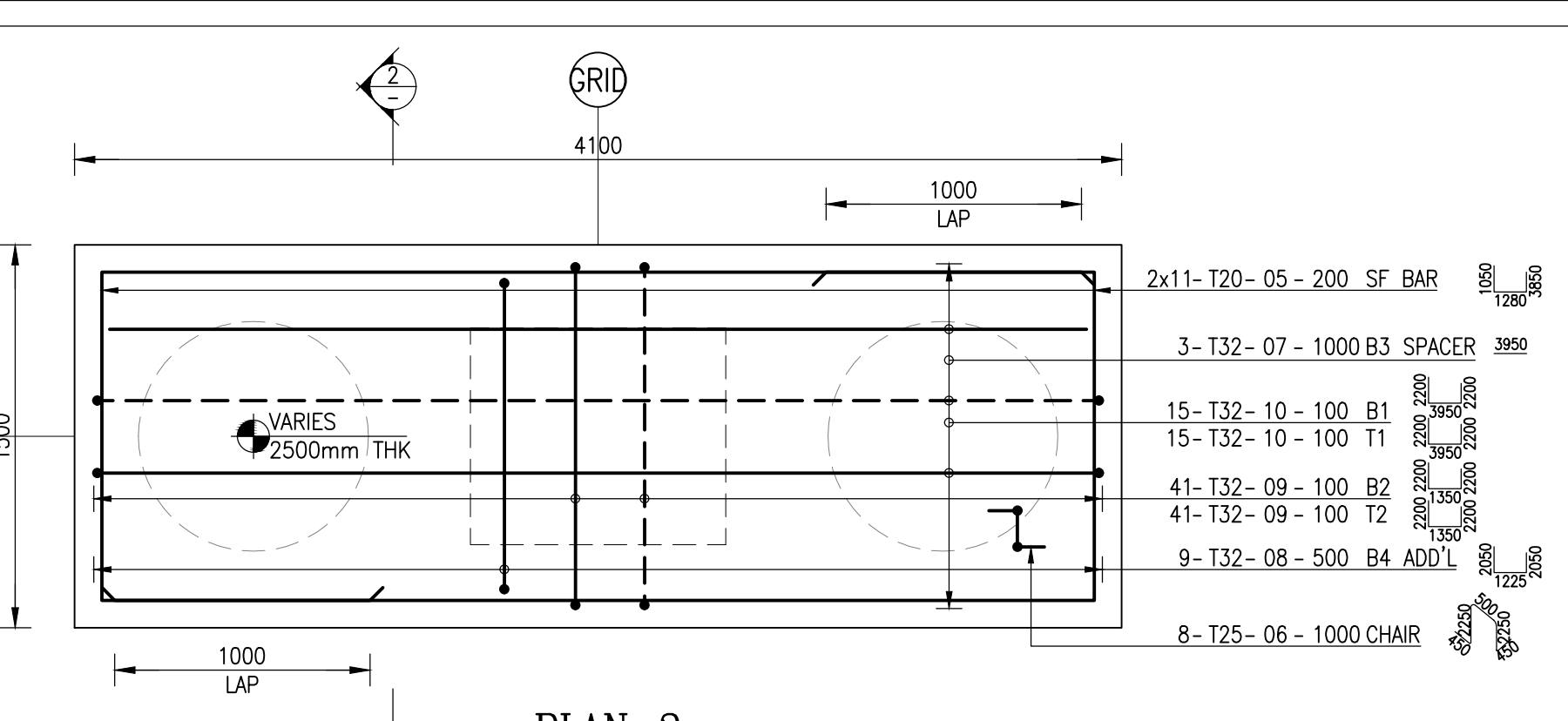
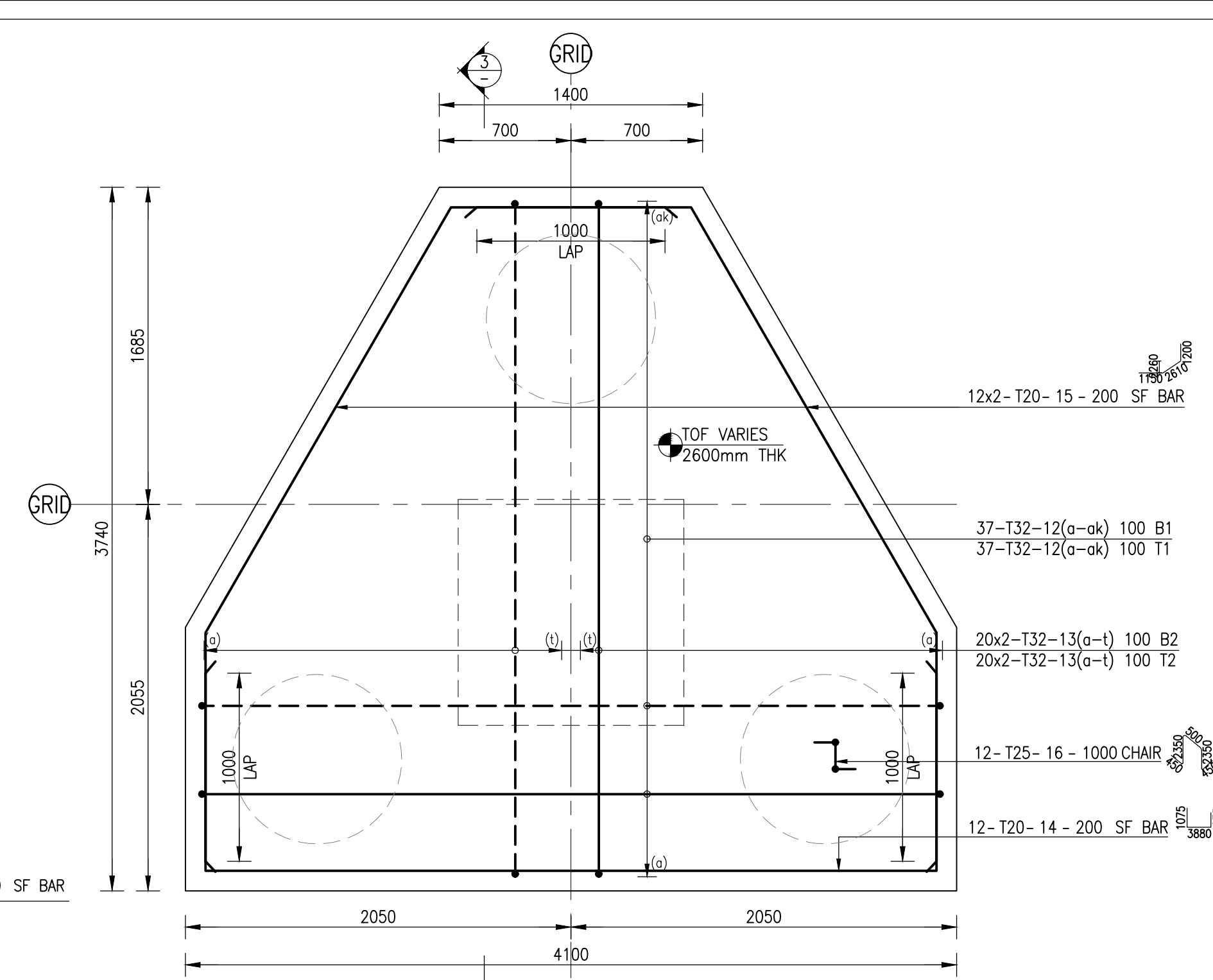


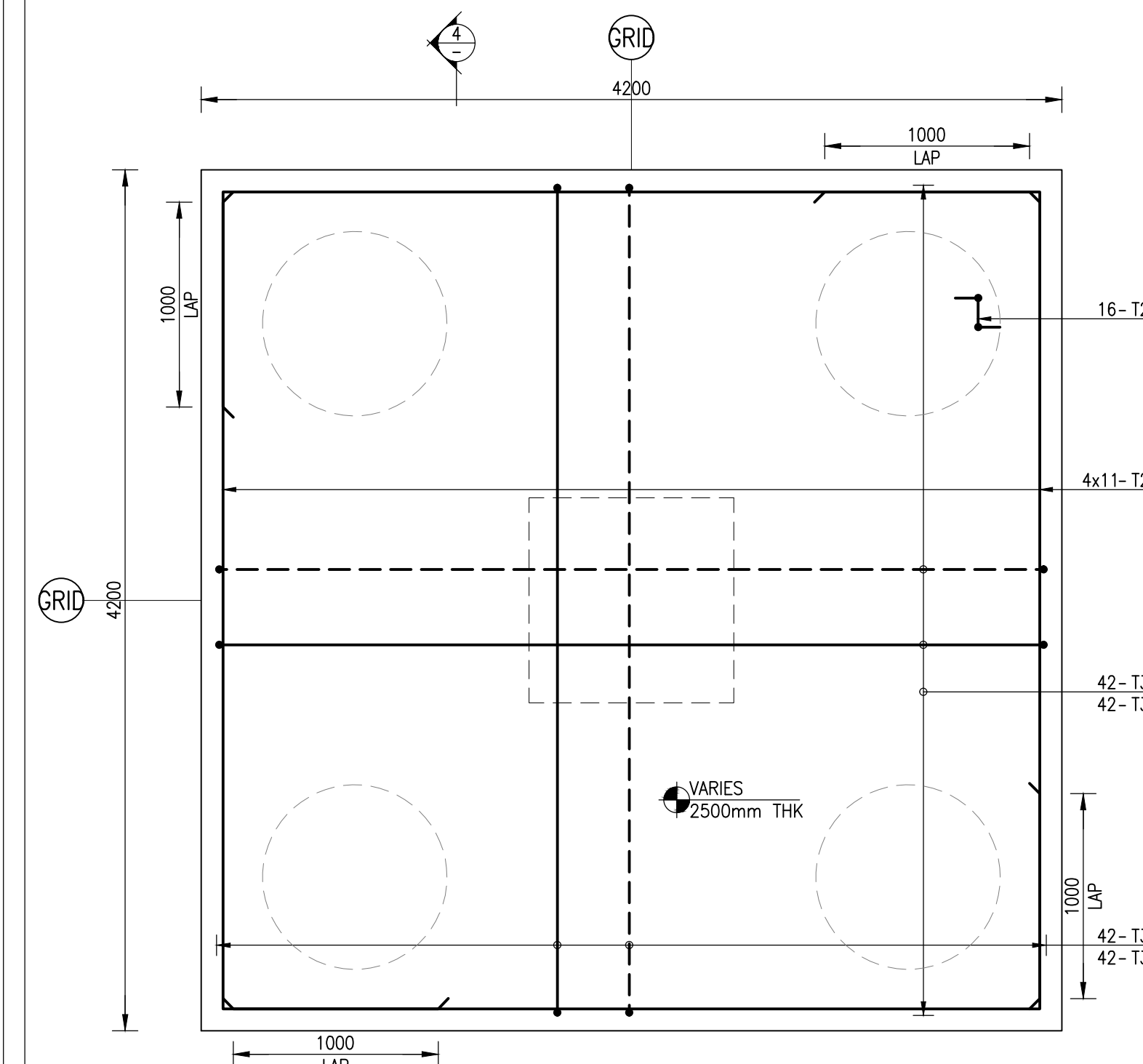
PILE CAP TO-PC1(1500x1500x1800) REINFORCEMENT DETAILS
SCALE 1:25 [FOR LOCATION DETAILS REFER TABLE-1] (32 Nos)



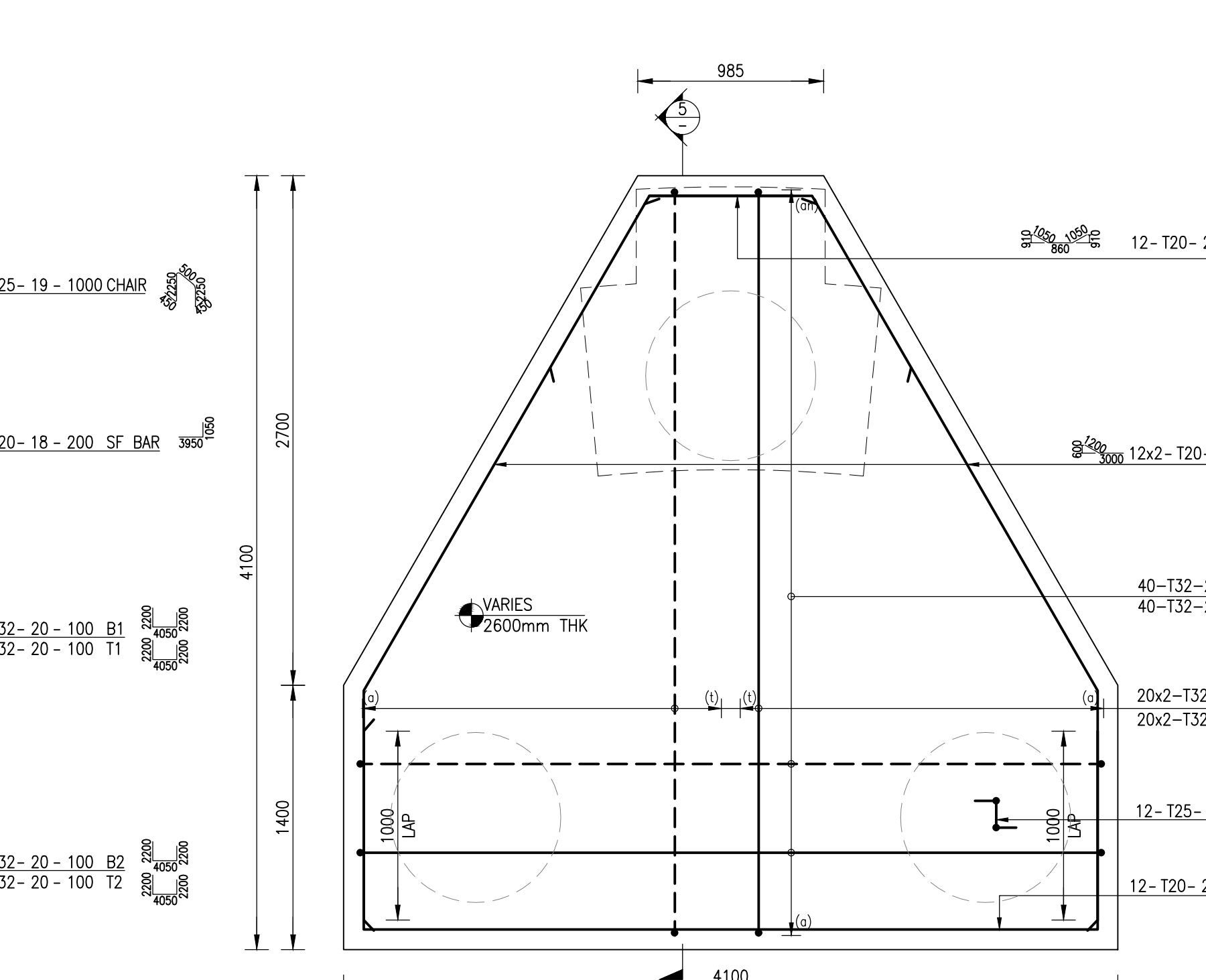
PILE CAP TO-PC2(4100x1500x2500) REINFORCEMENT DETAILS
SCALE 1:25 [FOR LOCATION DETAILS REFER TABLE-2] (49 Nos)



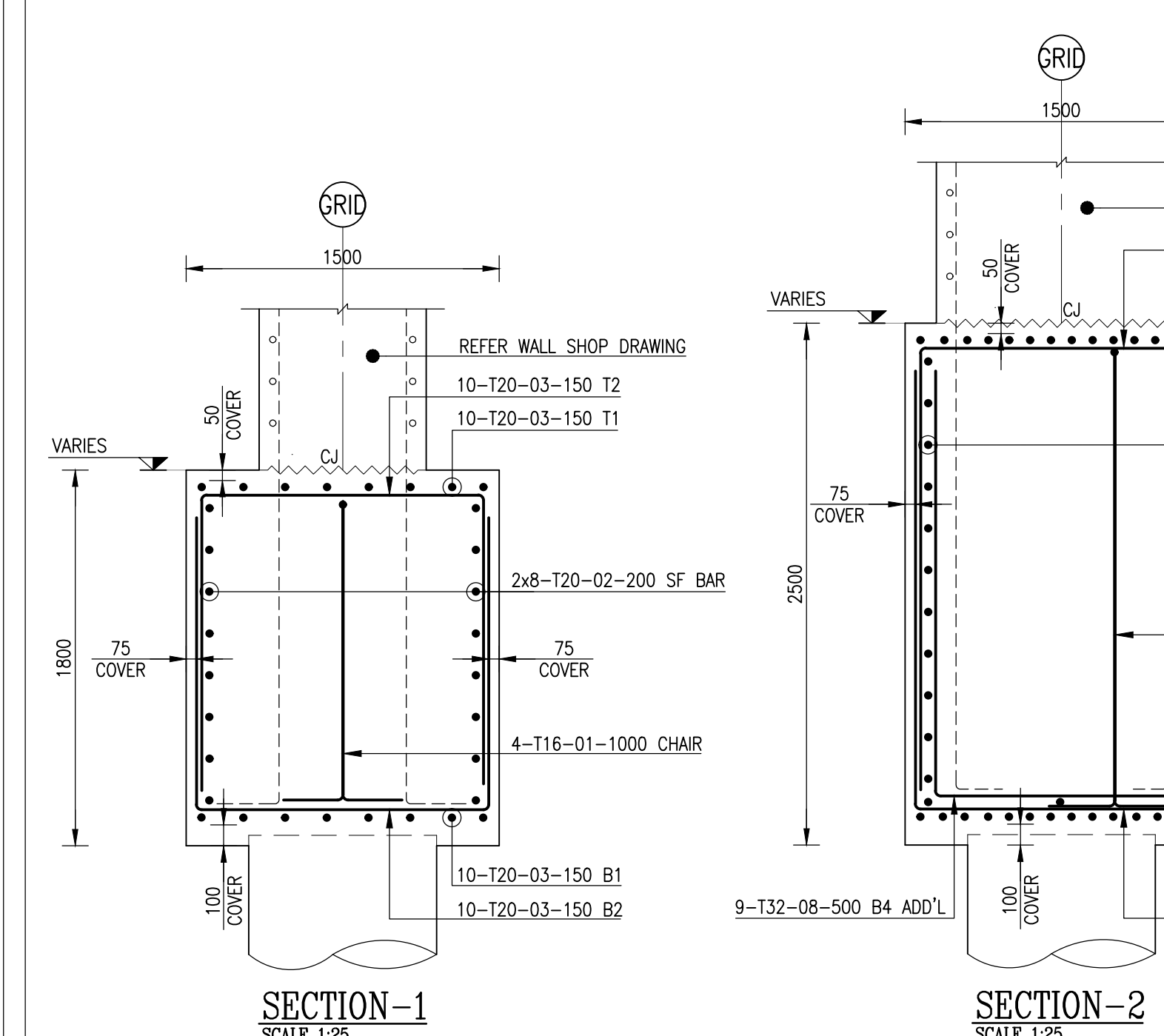
PILE CAP TO-PC3(4100x3740x2600) REINFORCEMENT DETAILS
SCALE 1:25 [FOR LOCATION DETAILS REFER TABLE-3] (5 Nos)



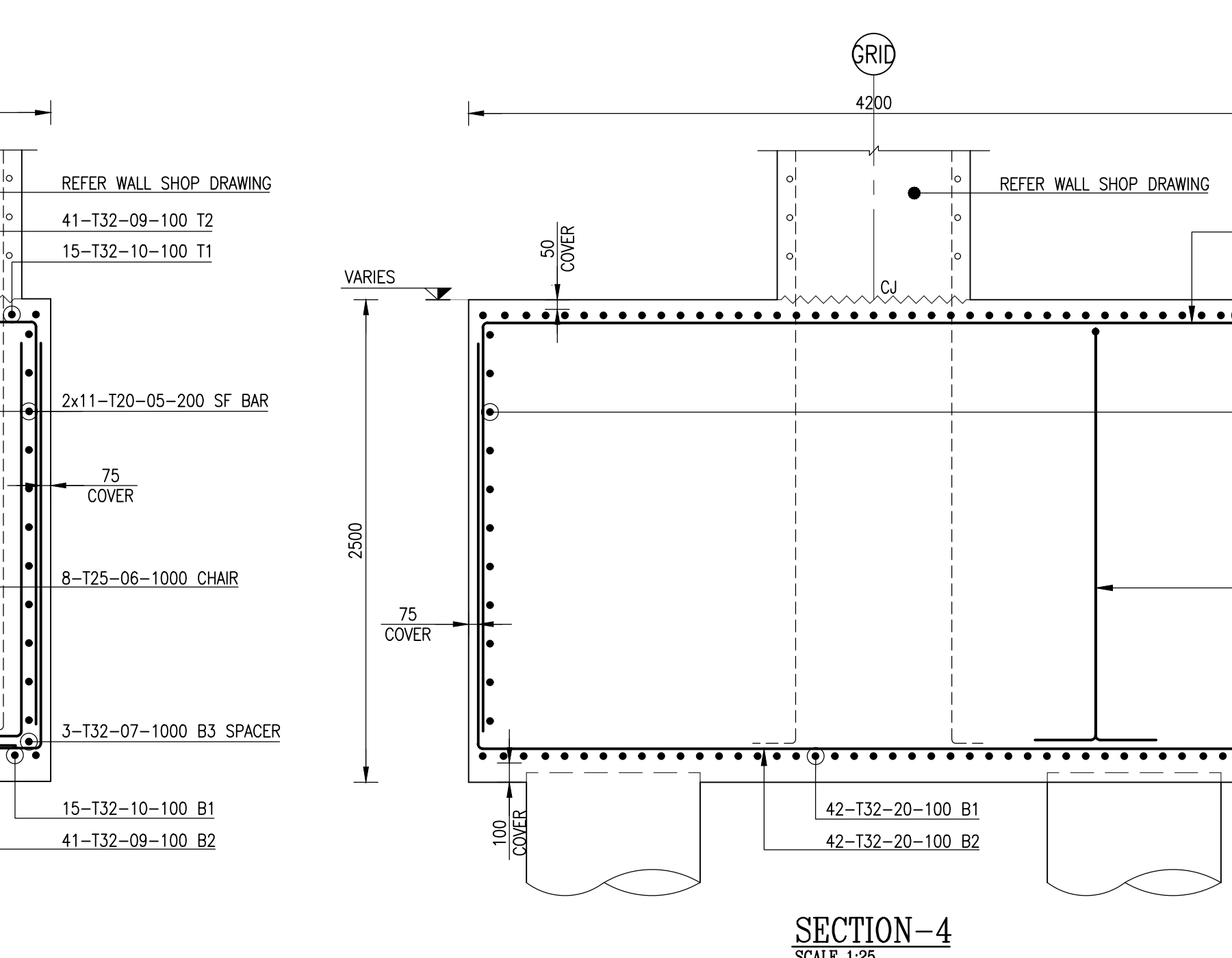
PILE CAP TO-PC4(4200x4200x2500) REINFORCEMENT DETAILS
SCALE 1:25 [FOR LOCATION DETAILS REFER TABLE-4] (6 Nos)



PILE CAP TO-PC5(4100x4100x2600) REINFORCEMENT DETAILS
SCALE 1:25 [FOR LOCATION DETAILS REFER TABLE-5] (3 Nos)



SECTION-1 SCALE 1:25 SECTION-2 SCALE 1:25



SECTION-4 SCALE 1:25 SECTION-5 SCALE 1:25

MARK	PILECAP SIZE			POUR	GRID	TOP LEVEL OF FOUNDATION	REMARKS	No. OF PILECAPS
PILECAP TAG	LENGTH (mm)	WIDTH (mm)	THICKNESS (mm)					
TO-PC3	4100	3740	2600	POUR-02	31/V	+2.000		1
					28/V	+2.000		1
				POUR-11	38-39/U	+3.300*		1
					39/V	+2.800		1
				POUR-13	36/AB	+2.200		1
TOTAL								5

BAR SIZE	PILECAP & RAFT SLAB BOTTOM BAR		PILECAP & RAFT SLAB TOP BAR	
	CONCRETE CYLINDER STRENGTH, f _c	CONCRETE CYLINDER STRENGTH, f _c	CONCRETE CYLINDER STRENGTH, f _c	CONCRETE CYLINDER STRENGTH, f _c
T10	500	500	620	585
T12	600	600	740	700
T14	700	700	865	820
T16	800	800	995	955
T20	1000	1000	1235	1170
T22	1200	1200	1480	1390
T25	1400	1400	1780	1660
T28	1600	1600	2135	2030
T32	1875	1875	2540	2415
T40	MECHANICAL COUPLER TO BE USED			

MARK	PILECAP SIZE			POUR	GRID	TOP LEVEL OF FOUNDATION	REMARKS	No. OF PILECAPS
PILECAP TAG	LENGTH (mm)	WIDTH (mm)	THICKNESS (mm)					
TO-PC4	4200	4200	2500	POUR-04	31/AB	+3.300*		1
					30/AB	+3.300		1
					37-38/M	+2.050		1
				POUR-08	36-37/P-R	+2.550		1
					37/P-R	+2.550		1
				POUR-13	36/AC	+2.200		1
TOTAL								6

BAR SIZE	CONCRETE CYLINDER STRENGTH, f _c	
	36 Mpa	240 Mpa
T10	365	345
T12	440	415
T14	510	485
T16	585	555
T20	730	690
T22	890	840
T25	1130	1070
T28	1290	1200
T32	1440	1370
T40	1800	1710

MARK	PILECAP SIZE			POUR	GRID	TOP LEVEL OF FOUNDATION	REMARKS	No. OF PILECAPS
PILECAP TAG	LENGTH (mm)	WIDTH (mm)	THICKNESS (mm)					
TO-PC5	4100	4100	2600	POUR-07	35-36/P-R	+2.550		1
					35/P	+0.700		1
					35/N-P	+0.700		1
TOTAL								3

MARK	PILECAP SIZE			POUR	GRID	TOP LEVEL OF FOUNDATION	REMARKS	No. OF PILECAPS
PILECAP TAG	LENGTH (mm)	WIDTH (mm)	THICKNESS (mm)					
TO-PC2	1500	1500	1800	POUR-01	24-25/W-X	+1.750		1
					33-34/S-T	+3.000		1
					33/R	+3.000		1
					33/S	+3.000		1
				POUR-06	32/R	+2.000		1
					32/S	+2.000		1
					32/T	+3.000		1
					33/T	+3.000		1
					33/P	+1.750		1
				POUR-07	35/M-N	+1.750		1
					35-36/N-P	+1.750		1
					37/L-M	+2.800		1
					37-38/P-R	+1.750		1
					37/R	+3.300*		1
					36-37/R	+3.300*		1
					36/R	+3.300*		1
POUR-08	36-37/M-N	+1.750		1				
	38/R	+3.300*		1				
	36-37/N	+1.750		1				
POUR-09	32/AA	+3.300*		1				
	32-33/AB	+2.200		1				
	32-33/AC	+2.200		1				
	39-40/W-X	+3.300*		1				
POUR-10	39/X	+3.300*		1				
	38/AA	+3.300*		1				
	38-39/T	+3.300*		1				
POUR-11	39/T	+3.300*		1				
	38-39/V-W	+3.300*		1				
	38-39/W-X	+3.300*		1				
	35-36/U-V	+2.250		1				
	36-37/U-V	+2.250		1				
POUR-15	25-26/AB	+4.300		1				
POUR-16	25-26/AB	+4.300		1				
TOTAL								32

MARK	PILECAP SIZE			POUR	GRID	TOP LEVEL OF FOUNDATION	REMARKS	No. OF PILECAPS
PILECAP TAG	LENGTH (mm)	WIDTH (mm)	THICKNESS (mm)					
TO-PC2	4100	1500	2500	POUR-02	29/V	+2.000		1
					30/V	+2.000		1
					31/AC	+3.300*		1
					30/AB-AC	+3.300*		1
					30/AC-AD	+3.000		1
					29-30/AC	+3.300*		1
					29/AA	+3.300*		1
					30/AA	+3.300*		1
					31/AA	+3.300*		1
					28/AA	+1.750		1
				POUR-05	31/U	+2.000		1
					31/T	+2.000		1
				POUR-06	34/S	+3.000		1
					35-36/M-N	+2.800		1
					36/M-N	+2.800		1
					36/P	+1.750		1
POUR-08	36-37/N-P	+1.750		1				
	35-36/AC-AD	+2.200		1				
	34-35/AC-AD	+2.200		1				
	33-34/AD	+2.200		1				
	34/AB	+2.200		1				
	35/AB	+2.200		1				
	35/AC	+3.300*		1				
	33/AB	+2.200		1				
	33/AB	+2.200		1				
	32-33/AD	+2.200		1				
	40-41/W-X	+3.300*		1				
	40-41/X-Y	+3.300*		1				
	39-40/Y-Z	+3.000		1				
	39-40/Z	+3.300*		1				
	38/AB	+3.300*		1				
	37-38/AB-AC	+3.000		1				
	39-40/U-V	+3.300*		1				
	39-40/T-U	+3.300*		1				
	39/S	+3.300*		1				
	40/T	+3.300*		1				
	40-41/T-U	+3.000		1				
	40-41/U-V	+3.300*		1				
	40-41/V-W	+3.000		1				
	40-41/W	+3.300*		1				
POUR-13	36-37/AB-AC	+3.000		1				
	37/AB	+3.300*		1				
POUR-15	34-35/S	+3.000		1				
	26-27/AB	+2.200		1				
	27-28/AB	+1.000		1				
	28/AB	+1.000		1				
	26/AB-AC	+2.200		1				
EO	25-26/AC	+2.200		1				
POUR-06	25/AC-AD	+2.200		1				
TOTAL								49

MARK	PILECAP SIZE			POUR	GRID	TOP LEVEL OF FOUNDATION	REMARKS	No. OF PILECAPS
PILECAP TAG	LENGTH (mm)	WIDTH (mm)	THICKNESS (mm)					
TO-PC4	4200	4200	2500	POUR-04	31/AB	+3.300*		1
					30/AB	+3.300		1
					37-38/M	+2.050		1
				POUR-08	36-37/P-R	+2.550		1
					37/P-R	+2.550		1
				POUR-13	36/AC	+2.200		1
TOTAL								6

MARK	PILECAP SIZE			POUR	GRID	TOP LEVEL OF FOUNDATION	REMARKS	No. OF PILECAPS
PILECAP TAG	LENGTH (mm)	WIDTH (mm)	THICKNESS (mm)					
TO-PC5	4100	4100	2600	POUR-07	35-36/P-R	+2.550		1
					35/P	+0.700		1
					35/N-P	+0.700		1
TOTAL								3

MARK	PILECAP SIZE			POUR	GRID	TOP LEVEL OF FOUNDATION	REMARKS	No. OF PILECAPS
PILECAP TAG	LENGTH (mm)	WIDTH (mm)	THICKNESS (mm)					
TO-PC2	1500	1500	1800	POUR-01	24-25/W-X	+1.750		1
					33-34/S-T	+3.000		1
					33/R	+3.000		1
					33/S	+3.000		1
				POUR-06	32/R	+2.000		1
					32/S	+2.000		1
					32/T	+3.000		1
					33/T	+3.000		1
					33/P	+1.750		1
				POUR-07	35/M-N	+1.750		1
					35-36/N-P	+1.750		1
					37/L-M	+2.800		1
					37-38/P-R	+1.750		1
					37/R	+3.300*		1
					36-37/R	+3.300*		1
					36/R	+3.300*		1
POUR-08	36-37/M-N	+1.750		1				
	38/R	+3.300*		1				
	36-37/N	+1.750		1				
POUR-09	32/AA	+3.300*		1				
	32-33/AB	+2.200		1				
	32-33/AC	+2.200		1				
	39-40/W-X	+3.300*		1				
POUR-10	39/X	+3.300*		1				
	38/AA	+3.300*		1				
	38-39/T	+3.300*		1				
POUR-11	39/T	+3.300*		1				
	38-39/V-W	+3.300*		1				
	38-39/W-X	+3.300*		1				
	35-36/U-V	+2.250		1				
	36-37/U-V	+2.250		1				
POUR-15	25-26/AB	+4.300		1				
POUR-16	25-26/AB	+4.300		1				
TOTAL								32

MARK	PILECAP SIZE			POUR	GRID	TOP LEVEL OF FOUNDATION	REMARKS	No. OF PILECAPS
PILECAP TAG	LENGTH (mm)	WIDTH (mm)	THICKNESS (mm)					
TO-PC2	4100	1500	2500	POUR-02	29/V	+2.000		1
					30/V	+2.000		1
					31/AC	+3.300*		1
					30/AB-AC	+3.300*		1
					30/AC-AD	+3.000		1
					29-30/AC	+3.300*		1
					29/AA	+3.300*		1
					30/AA	+3.300*		1
					31/AA	+3.300*		1
					28/AA			